

S E P T E M B E R 2 0 2 0

Welcome to

Mrs. O'Keefe's Class

All You Need to Know about the School Year Ahead!

Communication

The best way to get ahold of Mrs. O'Keefe is to **download the Seesaw Family App on your phone and use the QR code for your child to connect!** QR codes will be sent home with this newsletter.

Through seesaw, you will get to view your child's learning portfolio as well as be able to message Mrs. O'Keefe!

The school office will be using Remind. To receive these messages, **join @kaa2ke**

You may also give Mrs. O'Keefe your phone number and she will add you to the group. You may also email me at stephanie.wiebe@fmprsd.ab.ca



A Little About Your Teacher!

Mrs. O'Keefe was Miss Wiebe last year, she just got married in August. She was born and raised in small town Saskatchewan. She earned her teaching degree at the University of Alberta and has taught in the Fort McMurray area for the past 13 years. While teaching, she completed her Certificate of Children's Ministry through Vanguard College. Mrs. O'Keefe loves teaching and learning, **the beach**, the arts, cooking and baking, crafting, reading, hiking, Disney, cheering for the Saskatchewan Roughriders, fishing, and traveling – especially to see her family or experience sunshine and flip flops in a new place!

Make Sure You Also Check Out:

Safety First!

All the ways we will stay safe in our classroom and school during the Covid 19 pandemic!

Class Calendar

All the important dates including no school days and special class activities!

School Supplies

Special Instructions for bringing your supplies to school on the first day!

School Supplies

Please be sure to send school supplies to school **ready to be used on the first day**. **Taking supplies out of the packages** will help us to *stay safe and have fun* on our first day!

All school supplies will be kept separate from other students' this year and students will be asked not to share their supplies.

Birthdays

This year we will be celebrating birthdays with a freeze dance and some special activities. Due to Covid safety precautions, students will not be permitted to bring treats or toys to share.

Personal Items

Please do not send toys or sports equipment to school with your child. Personal items are not necessary and increase exposure for the class cohort. Thanks for understanding 😊

Our Daily Schedule

8:00am – First Bell (students enter school)

8:05am – Classes Begin

9:32am – Morning Recess (15 minutes)

11:27 – Lunch Recess (28 minutes)

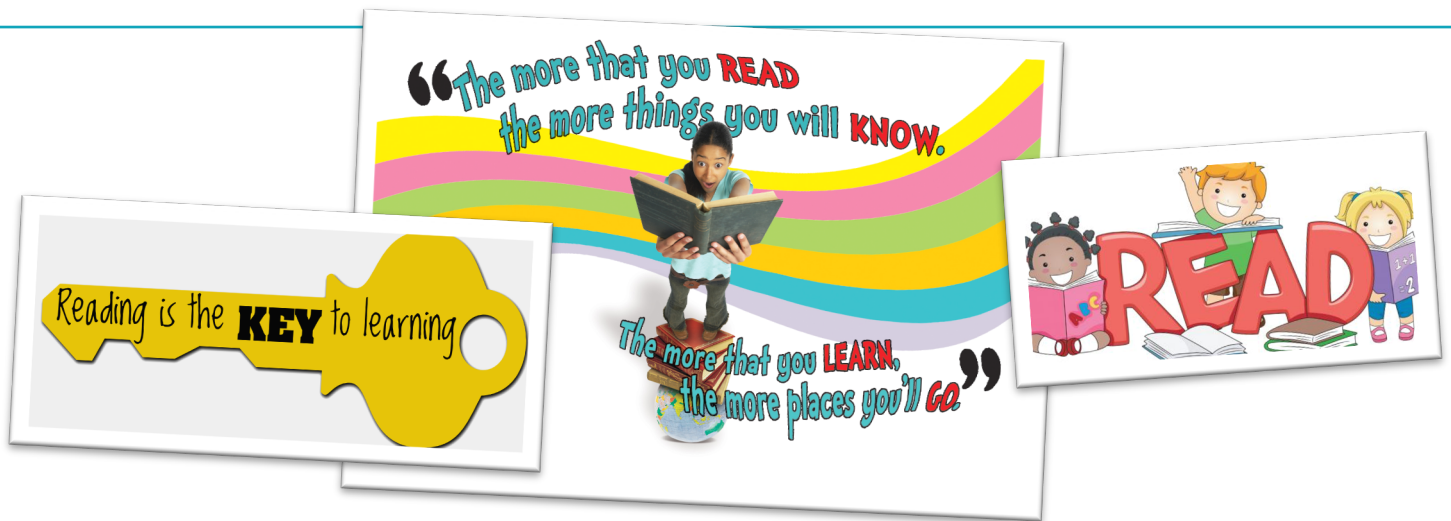
11:55 – Lunch Eating

2:40 – Dismissal

*Grade 1 will have Physical Education on Mondays and Fridays, please be dressed accordingly.

If you are picking your child up after school, please be **prompt! See the Safety First Page for pickup routines.





Homework

Daily Home Reading

Beginning in the first few weeks of school, Mrs. O'Keefe will send home logins through Seesaw for our home reading programs. Due to Covid precautions, levelled readers will not be sent home. Instead, students will be given levelled books to read online.

Research has shown that just 10 minutes of reading at home daily can make a significant impact on children's language development.

Please take 10 - 20 minutes each evening to read the book and engage your child in a few questions about the characters, plot, or lesson of the book.

Weekly Spelling

Each week your child will have a list of 5 - 10 spelling words to master. These words will reflect spelling patterns as well as sight words. At the end of each week will be a spelling test.

Please practice your child's words with them throughout the week. Spelling will begin the week of September 28.



Learning Tools

Our class will be using a variety of tools to enhance our learning. Below are some of the tools you can use at home too!

*Passwords will be sent out for individual students as they become available.

Bible for Kids

Mathletics.com (Password Required)

Starfall.com

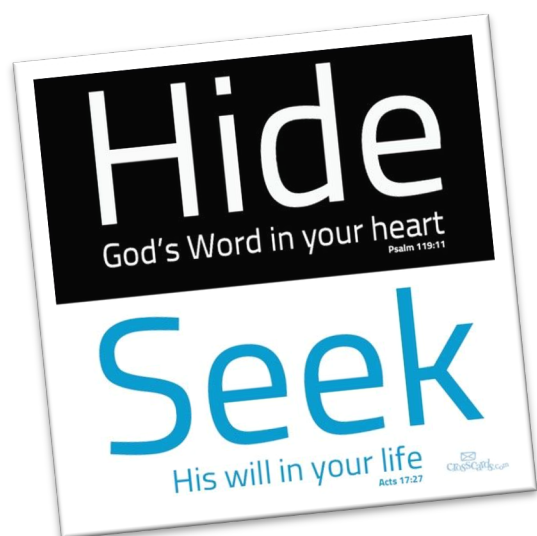
Teachyourmonstertoread.com

Monthly Memory Verses

Each month we will be learning about one throughline as a school. These are areas of Christian character that we are growing in. Each month we will have one memory verse that goes with the throughline for the month.

September – Community Building

How pleasing it is when God's people all come together as one! ~ Psalm 133:1 (ERV)



January – Order Discovering

For God is not a God of disorder but of peace.
~ 1 Corinthians 14:33 (NLT)

March – Servant Working

For you have been called to live in freedom, my brothers and sisters. But don't use your freedom to satisfy your sinful nature. Instead, use your freedom to serve one another in love. ~ Galatians 5:13 (NLT)

May – Beauty Creating

Come, all of you who are gifted craftsmen.
Construct everything that the Lord has commanded.
~ Exodus 35:10 (NLT)

October – Creation Enjoying

Everything in the world is yours – you created it all.
~ Psalm 89:11 (NLT)

November – Justice Seeking

Learn to do good. Seek justice. Help the oppressed. Defend the cause of orphans. Fight for the rights of widows. ~ Isaiah 1:17 (NLT)

December – Idolatry Discerning

You shall have no other gods before me.
~ Exodus 20:3 (NIV)

February – Image Reflecting

Put on your new nature, created to be like God – truly righteous and holy. ~ Ephesians 4:24 (NLT)

April – Earth Keeping

The Lord God took the man and put him in the garden of Eden to work it and keep it.
~Genesis 2:15 (NLT)

June – God Worshipping

Praise the Lord with me. Let us honor his name.
~ Psalm 34:3 (ERV)

School Calendar and Class Specials!



Monday, August 31
First Day of Grade 1



Tuesday, September 1 –
Monday, September 3
STAGGERED ENTRY FOR
OTHER GRADES



Tuesday, September 4



Friday, September 18



Friday, October 2



Monday, October 12



Friday, October 30



Wednesday, November 11
REMEMBRANCE DAY



Friday, November 20



Friday, November 1



Monday, November 23



Friday, December 4



Thursday, December 17
Class Christmas PJ Party!



Friday, December 18 –
Sunday, January 3
CHRISTMAS BREAK



Monday, January 4
First Day Back!



Friday, January 15



Friday, January 29



Friday, February 12



Monday, February 15



Saturday, February 20 –
Sunday, February 28
CONVENTION BREAK



Wednesday, March 3
100th Day of School Party!



Friday, March 12



Friday, April 2 –
Sunday, April 11
EASTER BREAK



Friday, April 23



Friday, May 7



Friday, May 21 –
Monday, May 24
MAY LONG WEEKEND



Thursday, June 24
LAST DAY FOR STUDENTS!

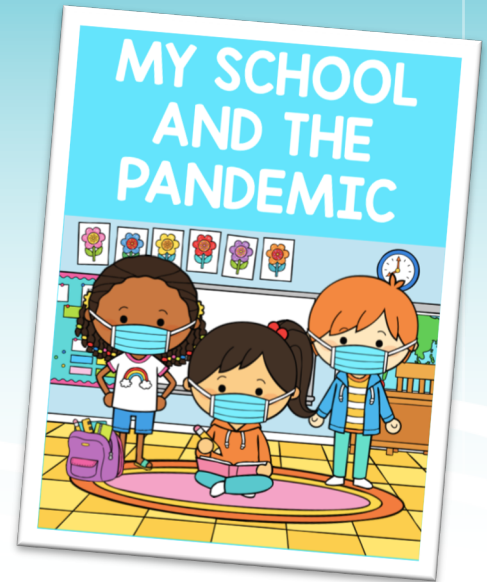


Safety First – Covid 19 Precautions

Entry and Exit

Entry – Students will come to the side door facing the playground (same door as last year). Look for the pylon labeled 1. Students will line up and wait for their turn to enter the school as a cohort. Parents are encouraged to remain in their vehicles. When that is not possible they will be required to mask, social distance, and remain outside the school due to Covid restrictions.

Dismissal – Bus students will be led to their bus by a supervisor. All other Grade 1 students will be led by a teacher to the area by the C-can at the front doors of the school. Parents will make eye contact with the teacher and then the child will be released by the teacher into the parent's care. **Prompt** pickup is very important!



Snacks & Lunches

Grade 1 does not have a microwave. Students will need to use a thermos to have heated food for lunches. Cutlery will also need to be provided for student lunches at all times.

This year due to covid restrictions lunches of any kind cannot be delivered to the school. Students must come to school with their lunch packed. In the event a student forgets their lunch, a small snack can be provided by the school.

Students will not be allowed to share food and lunches must remain nut free, as we have students with severe allergies!



Protocols/Procedures

Masks are recommended for close contact areas such as close play, hallways and buses but not required in Grade 1. Please do what works best for your child. It is very important however to complete the daily screen before coming to school. This can be obtained in the district and school re-entry documents or a copy can be found at the office. If your child has any symptoms please keep your child home. If your child shows symptoms at school, they will be asked to wear a mask and escorted to the office to be picked up immediately by parents or emergency contact. Please ensure the office has all up to date phone numbers. Please see the FMCS back to school plan for more detailed information.