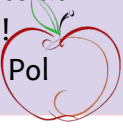


February Newsletter



A Note From Mrs. Vanden Pol

Welcome to another month! It's hard to believe we are at February already. It has been wonderful having the students back in the classroom the past few weeks. Their excitement for learning, their energy, and their smiles are so contagious. It is such a blessing to be part of a group of students who daily demonstrate kindness, joy, and patience with each other. February is always the last little push through the cold weather before we hit more mild temperatures in March. The days are getting longer and we have a little break to look forward to at the end of the month. Of course that also means a week I don't get to spend with my wonderful students! Stay warm and stay safe!

Mrs. Vanden Pol 

Spotlight on Christian Education

Looking for God in All the School Places

Take a peek at our class discussion board for where we have seen God in some of our learning.

Looking for GOD in all the SCHOOL places	Where can we find God in our Leadership unit in Social Studies?	Where can we find God in our Data Analysis unit in Math?
	<ul style="list-style-type: none">○ God is always with us○ Learning about different people.○ Being kind to everyone○ God is the best leader of all○ God gave us the opportunity to be leaders even if we aren't elected.○ We are all created to be different and unique.○ We have different abilities and talents and we can use them in different ways.	<ul style="list-style-type: none">○ God helps us with everything, even math.○ God created all different kinds of numbers.○ We used bar graphs to find the most important or popular choice and we know God should always be our most important choice.○ Looking for God in all the school places is like collecting data about Him.○ Numbers never end just like God never stops helping us in our life.○ God puts all the numbers in order.○ God made all the numbers.○ God is always looking for the good in us, just like we look for data in Math.

Throughline of the Month

The throughline of the month in February is Image Reflecting. To be an Image Reflector means to bear the image of God in our daily lives. It is deeper than the things we do, it is who we are. We were made to reflect God's image! The more Christ-like our actions are, the more clearly we are able to shine Christ's light in a dark world.

Image Reflector Memory Verse - Due February 19th

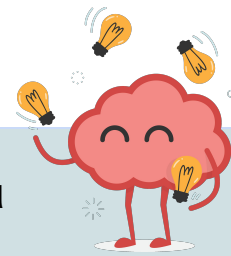
This is love: not that we loved God, but that He loved us and sent His Son as an atoning sacrifice for our sins. Dear friends, since God so loved us, we also ought to love one another. No one has ever seen God; but if we love another, God lives in us and His love is made complete in us.

1 John 4:10-12

Bible Unit

We are continuing to journey through the life of Joseph and are learning how God worked everything together for good even when Joseph's situation seemed hopeless.

Look at What We're Learning



Math

We will be spending February looking at using our addition and subtraction skills to solve word Problems and estimate sums and differences.

Language Arts

Students are working on individual goals for reading and will be meeting regularly one on one with Mrs. Vanden Pol to check their progress and learn new reading strategies.

Students are working on learning the patterns of English in Word Work using the Words Their Way program. They are demonstrating more and more confidence with finding and discovering patterns.

We are continuing to look at writing main events. Ask your child about the ingredients in our “Main Event Sundae”. Grab a book and see if they can point out some examples for you.

Social Studies

We are going to be starting our unit on climate and geography as we examine how different places in the world have different seasons, weather, and landforms than where we live.

Science

Students have been busy exploring the properties of different classroom building materials as we get ready to try constructing a house, a bridge, and a pool for Mickey Mouse and Donald Duck in our building unit.

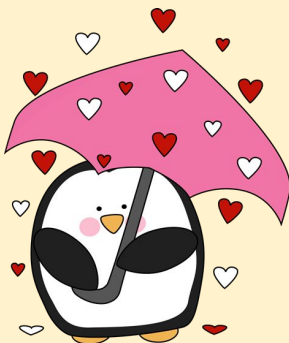
Health

This month we are moving into some heart health talk as we chat about the importance of healthy eating, exercise, and getting a good night's sleep.




Important Dates

February

- 5th - Bible Character Day
- 8th - Valentine's due to school
- 11th - Pink/Red Day
- 15th - No School (Family Day)
- 19th - Pink Shirt Day (Bullying Awareness)
- 22nd - 26th - Convention Break (No School)



Reminders

- ★ **Remind**
If you haven't joined yet please join by [clicking this link](#) or by following these [instructions](#).
 - ★ **Daily COVID Checks**
Please remember to do a daily assessment of your child's health before sending them to school.
 - ★ **School Website**
Please remember to check the [school website](#) and our social media pages to stay up do date on important information.
-  @FMChristianRoyals  @ChristianFMPSD  @fm_christian_school
- ★ **Nut Aware School**
We are a nut aware school which means students should avoid bringing any type of nut product for snacks and lunch.
 - ★ **Utensils**
Please remember to send spoons and forks in student lunches as the school is unable to provide them this year.
 - ★ **Scholastic Orders**
You can order Scholastic books online this year. Please use our **class code: RC178960** when checking out.